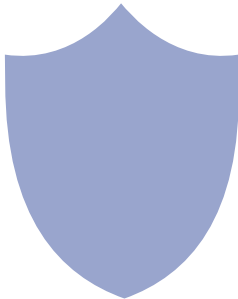
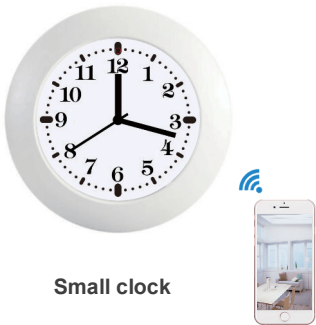


Wanduhr WLAN Kamera  
Bedienungsanleitung



Big clock

1



Small clock

2

Overview:

This security Wi-Fi camera kit is equipped with a powerful 1080p smart Wi-Fi camera for live streaming video, and it comes with motion detection video recording and alarm.

Mini design and easy hidden to DIY any kinds of unique and exclusive security cameras for home & business surveillance.

Usages: Nanny camera, home/ shop/ office/ warehouse surveillance camera.....

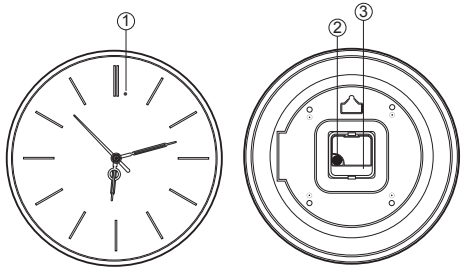
Warning : " illegal use is not allowed! Or, there will be consequences to bear! "

In the box:

- 1x Wall clock Wi-Fi camera
- 1x USB cable
- 1x AC power adapter
- 1x User manual
- 1x Hook rack
- 1 x Reset pin

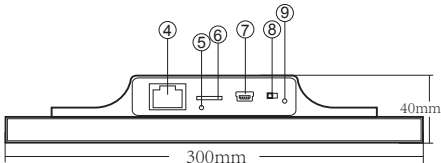
3

Product structure



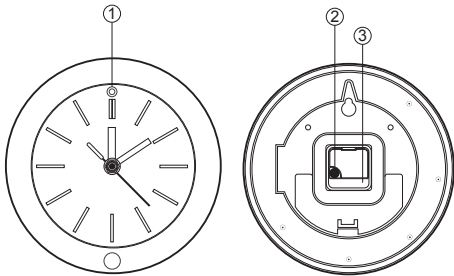
- ① Camera
- ② Time gear
- ③ Clock battery

4



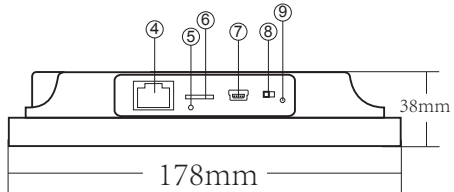
- ④ RJ45 port
- ⑤ Reset
- ⑥ Micro SD card slot
- ⑦ USB port
- ⑧ ON/OFF (For Wi-Fi Camera)
- ⑨ Indicator light

5



- ① Camera
- ② Time gear
- ③ Clock battery

6



- ④ RJ45 port
- ⑤ Reset
- ⑥ Micro SD card slot
- ⑦ USB port
- ⑧ ON/OFF (For Wi-Fi Camera)
- ⑨ Indicator light

7

Getting started of Wi-Fi camera part

Step1: Download and install APP

Search and download free APP named "HDSmartIPC" in Apple APP store, Google play or Electronic market, and install it.



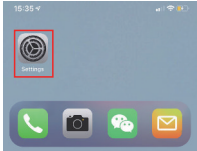
HDSmartIPC

Step 2: Plug in power and turn switch to ON, wait for 1 minute;

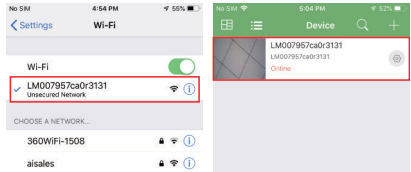
Step 3:Connect WIFI.

8

1. Open smartphone settings, search and connect the device's wireless signal named "AI/LM.....", wait Wi-Fi connected, and phone status bar appear Wi-Fi symbol.



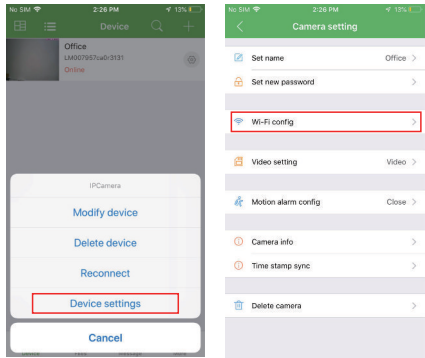
2. Enter APP, app will add just connected camera automatically, Camera Online then;



TIPS: This step = P2P mode, can check video locally when without Wi-Fi.

9

3. Press the gear icon after the camera and select Other Config ,select Wi-Fi Config.

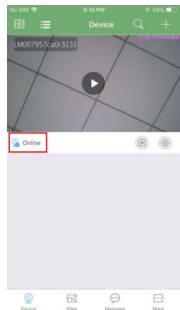


10

4. Select the router Wi-Fi and input password, camera will be connected to the router Wi-Fi. The smartphone will disconnect the signal from device and connect to the router Wi-Fi.


5. Quit APP, and device restart automatically and ready again in 30 seconds.

6. Enter APP and check live video locally or remotely anywhere.

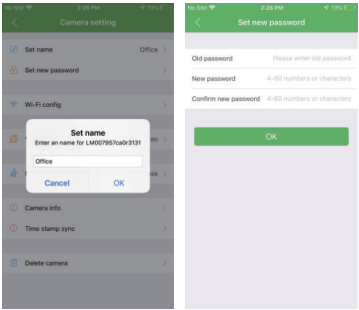


11

Set camera name and private code

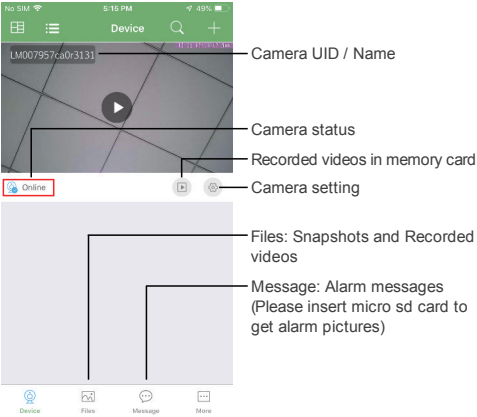
Set name:Press the  after the camera,select Modify device, insert name like Office,Room.....

Set new password:Press the  after the camera and select Other Config ,select Change access code and change it to new one. Default one is 8888.



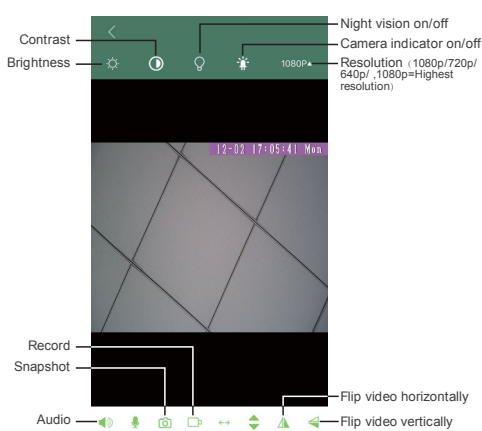
12

APP introduction:

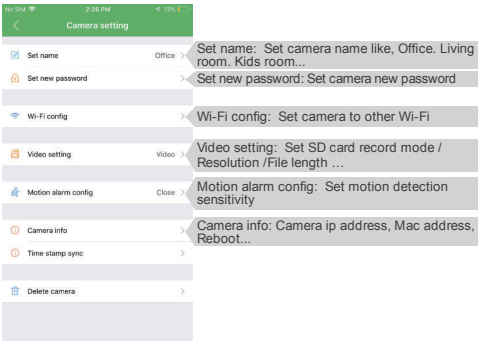


13

Live video page - Click camera to check



14



**TIPS:**Each setting in Device Settings, please scroll down and press ok to save the setting.

15

Set and watch by PC remotely (Windows Only)



Scan to download PC Client


16

Specification

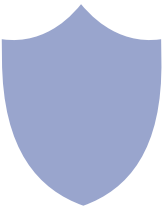
Sensor	2.0 Mefapixel CMOS Lens
Video resolution	Max 1920*1080
Frames	Max 25fps
Compressed format	H.264
View angle	90°
Type of memory card	TF card>=Class 4/10 and HC marked
Maximum capacity of memory card	128GB
PC operation system	Windows 7, 8 / Mac OS X
Play software	VLCPlayer/SMPlayer
Mobile phone operation system	Android/iOS
Web browser	IE7 and above,chrome,firefox
Power consumption	400MA/3.7V
Recording	1 minute/ around 20MB
Working time	5-6 hours
Charging time	7-9 hours
Power adapter	5V / 2A

17

FAQ

- Q: Can't get device Wi-Fi signal?  
A:Press reset key for 10 seconds and wait 1 minute.
- Q: Live video not smooth and clear?  
A: Select suitable resolution according to the real time network environment.
- Q: Motion detect set and alarm?  
A: 1). Set motion detect sensitivity in Alarm Config;  
2). When motion detected, camera will push a alarm message to your phone and take one picture for checking in the APP [ Page 13 - Message ]. **(A micro sd card MUST be inserted for saving alarm pictures)**
- Q: How to play micro SD card video?  
A: 1). Use a card reader to read and play;  
2). Use APP to play back [ Page 13 -  ];  
3). Play back in good speed network.

18



The end!

19