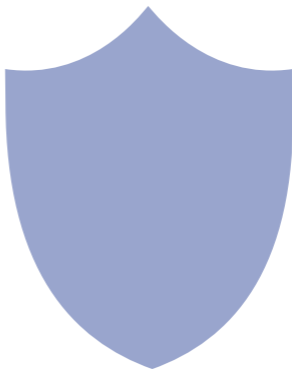


# **Ultra Long Standby Wi-Fi Security Camera** with Low Power Consumption

User Manual

Version: Mar,2021





Size: 56x121x136mm



**Tips:** Please take off the transparent protect film on the device and replace it with a black lens cover (Plastic) before using.

## Overview:

The Ultra Long Standby WiFi Security Camera, it is built with high tech of super low power consumption 450 $\mu$ A/hour to save energy for around 1 year (Optional: 2 years) standby after being fully charged.

First, it can be used for watching live streaming video day and night (night vision around 5 meters), or taking photo and video by APP in smart-phone remotely after WiFi connected;

Second, its PIR sensor will make precisely motion detect recording for surveillance use (around 5 meters distance and 2 meters height) . Also, it has cycle recording and work when charging.

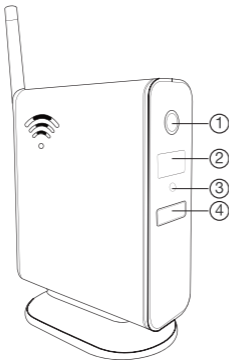
**Usages:** Nanny camera, Home/ Shop/ Office/ Warehouse surveillance camera.....

**Warning :** " illegal use is not allowed! Or, there will be consequences to bear! "

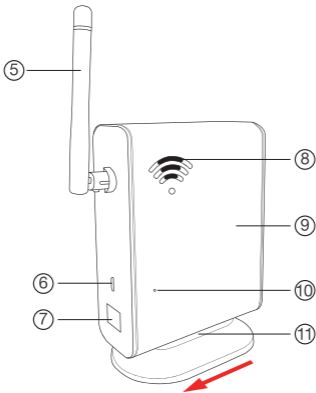
## In the box:

1 x Camera Unit	1 x Micro SD Card Reader	1 x USB Cable
1 x User Manual	2 x Batteries Inside Device (Default)	

## Product structure

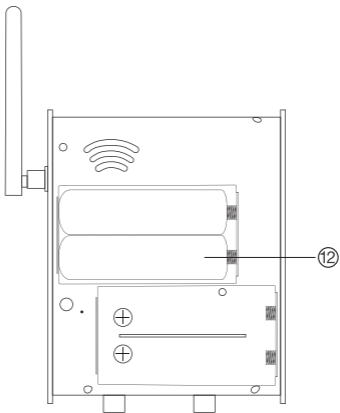


- ① Camera
- ② Invisible night vision leds
- ③ Light sensor
- ④ PIR sensor



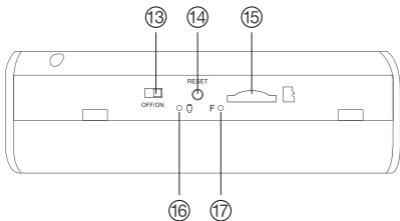
**TIPS:** Push the router base left to open.

- ⑤ Antenna
- ⑥ USB port
- ⑦ Dummy net cable port
- ⑧ Camera speaker
- ⑨ Side cover (Can be opened)
- ⑩ Mic
- ⑪ Router Base (Push left)



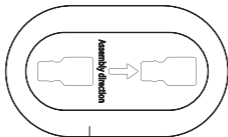
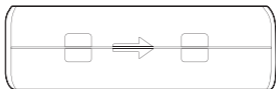
⑫ 2 x Batteries inside device (Default)

## Top side of router (Side cover opened)



- ⑬ ON/OFF switch      ⑭ Reset key      ⑮ Micro SD card slot  
⑯ Charging indicator      ⑰ WiFi indicator

## Bottom side of router



11

TIPS: Please match the two arrows' direction to assemble the device.



## **Reset key tips:**

One press to restart device;

4 seconds press to pair with WiFi (One beep sound);

6 seconds press to reset device (Two beep sounds).

## **Wi-Fi indicator tips:**

Solid blue when pairing with WiFi;

Turn off when WiFi paired;

Blink once when motion detected.

## **Charging indicator tips:**

Solid red when charging, and off when fully charged.

## Wi-Fi Camera Connection Setting

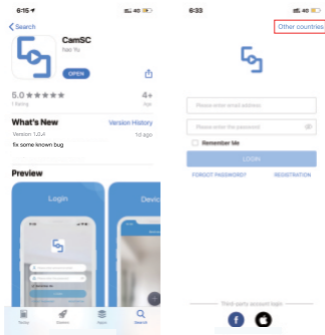
Step1: CamSC APP

1. Scan below QR code or search and download free APP named <CamSC> in Apple APP store, Google play or Electronic market, and install it;



APP:CamSC

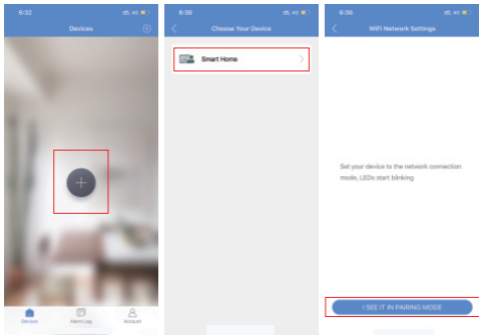
2. Open APP CamSC, select current region at the top right corner. Register with email, or third-party account like Facebook or IOS account. (Tips: If a code doesn't arrive, please check the spam folder first.)



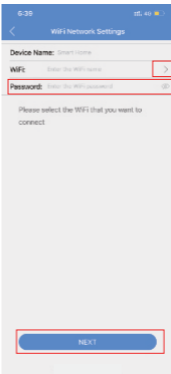
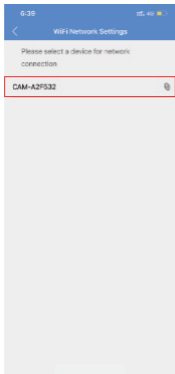
Step 2: Take off back cover --> Insert micro SD card --> Turn back ON/OFF switch (WiFi indicator is solid blue.);


### Step 3: Connect WiFi

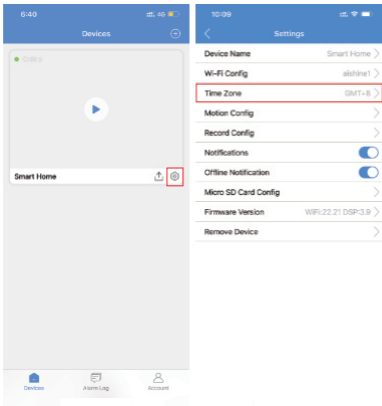
1. Press Reset key 4 seconds till a beep sound(WiFi indicator blink slowly and ready for pairing WiFi);
2. Open APP CamSC >> Click + >> Smart Home >> Device in pairing mode >> CAM-xxxxxx.



3. Click > at the end of WiFi to select the local router WiFi, then input password.  
Click NEXT and wait around 10 seconds to finish the configuring;  
Device Binding Successful and online now.




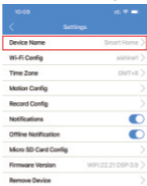
4. Click  in APP'S first interface, select Time Zone and choose Time Zone to ensure live streaming video with the set time zone.



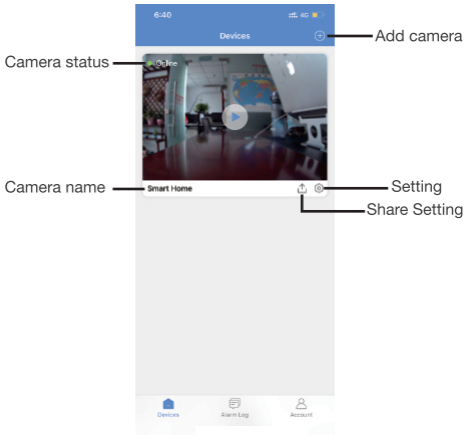
## Camera Normal Status:

1. Camera always in standby mode;
2. Once motion detected, it will push a notification to phone, do a snapshot and record a 15 seconds video clip into memory card;
3. Sleep and alert after 1 minute once motion detected again.

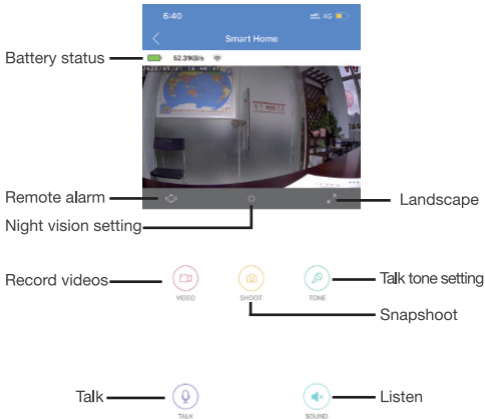
**Set name:** Press the  after the camera, select Device Name --> Input needed name like Office, Living room etc...

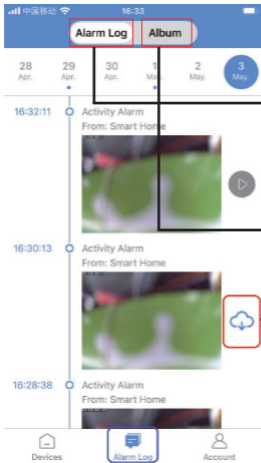


# APP Introduction





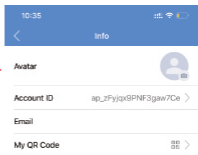
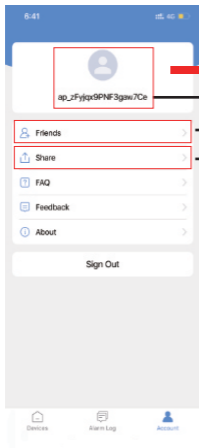




Alarm pictures / Alarm videos in Micro SD card

Recorded pictures and videos by APP

Download alarm videos from Micro SD card to phone



Account info and QR code

Add friends by input account info or scan QR code

Sharing setting



Video recording setting

Check left capacity, Format...

Check current firmware version,  
or update to latest version

## Specification

Resolution	2 Mega CMOS
Video pixel	1920*1080
Frames	Max 25fps
Compressed format	H.264
View angle	145 Degree
Type of memory card	TF card>=Class 4/10 and HC marked
Maximum capacity of memory card	64GB
Mobile phone operation system	Android/iOS
Compatible router	2.4G and Mobile hotspot
Two way talking	Yes
PIR alarm pictures in server	15days
Standby power consumption	500 $\mu$ A
Power consumption	400mAh
Power consumption with night vision	640mAh
Recording	1 minute/ around 24MB
Battery life x 2 batteries	Around 180days
Standby time x 2 batteries	Around 1 year
Charging time x 2 batteries	Around 12 hours
Battery life x 4 batteries	Around one year

<b>Standby time x 4 batteries</b>	<b>Around two year</b>
<b>Charging time x 4 batteries</b>	<b>Around 24 hours</b>
<b>Power adapter</b> (not include but needed)	<b>5V / 2A</b>

## FAQ

1. Is device with offline and low power notification?  
Yes.

2. What does the device do when WiFi off?

Keep searching WiFi signal 3mins, 10mins, 1hour, 2 hours, 5hours,24hours later; If WiFi on, it will be connected to WiFi automatically.



**The end!**