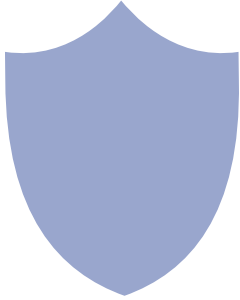


# HD 1080P Security Wi-Fi Camera

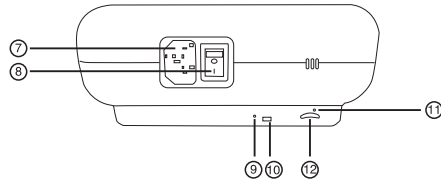
User Manual  
Version: June, 2021



Size:175x70x73mm



**TIPS:**Only USA and Australia style AC output is available for this item in the front side;(Not support European and UK AC output).



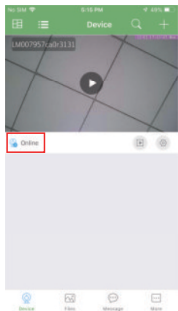
- ⑦ Charging port
- ⑧ Power ON/OFF switch
- ⑨ Wi-Fi Indicator
- ⑩ Wi-Fi/Time ON/OFF switch
- ⑪ Reset
- ⑫ Micro SD card slot

3

4. Select the router Wi-Fi and input password, camera will be connected to the router Wi-Fi. The smartphone will disconnect the signal from device and connect to the router Wi-Fi.

5. Quit APP, and device restart automatically and ready again in 30 seconds.

6. Enter APP and check live video locally or remotely anywhere.



7

## Getting started of Wi-Fi camera part

### Step1: Download and install APP

Search and download free APP named "HDSmartIPC" in Apple APP store, Google play or Electronic market, and install it.



HDSmartIPC

Step 2: Plug in power and turn on two switch, wait for 1 minute;

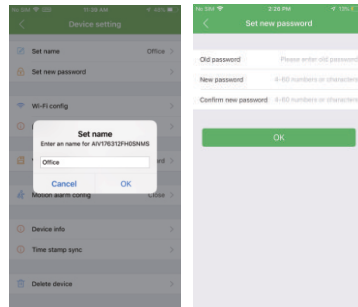
Step 3:Connect WiFi

4

## Set camera name and private code

Set name:Press the after the camera and select Device settings,select Set name, insert name like Office,Room.....

Set new password:Press the after the camera and select Device settings,select Set new password and change it to new one. Default one is 8888.



8

## Overview:

This security Wi-Fi camera kit is equipped with a powerful 1080p smart Wi-Fi camera for live streaming video, and it comes with motion detection video recording and alarm.

Mini design and easy hidden to DIY any kinds of unique and exclusive security cameras for home & business surveillance.

**Usages:** Nanny camera, home/ shop/ office/ warehouse surveillance camera.....

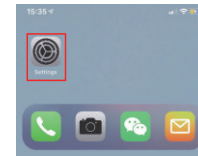
**Warning :** " illegal use is not allowed! Or, there will be consequences to bear! "

## In the box:

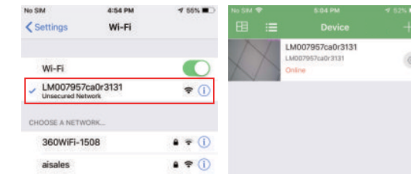
1 x Wi-Fi camera      1 x User manual      1 x Reset pin  
1 x Micro SD card reader      1 x Power adapter

1

1. Open smartphone settings, search and connect the device's wireless signal named "AI/LM.....", wait Wi-Fi connected, and phone status bar appear Wi-Fi symbol.



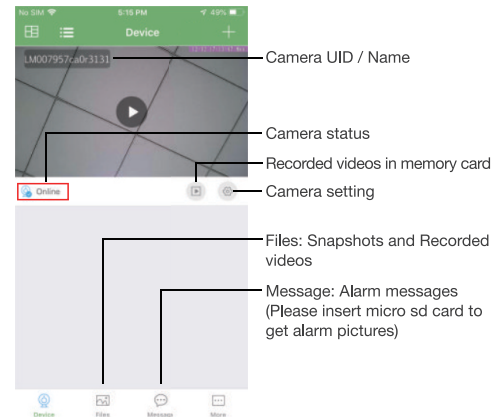
2. Enter APP, app will add just connected camera automatically, Camera Online then;



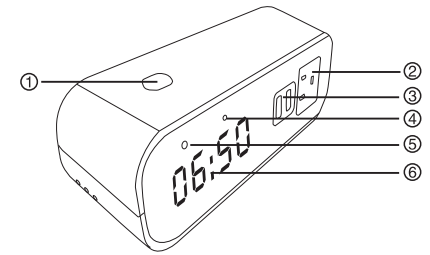
**TIPS:** This step = P2P mode, can check video locally when without Wi-Fi

5

## APP introduction:



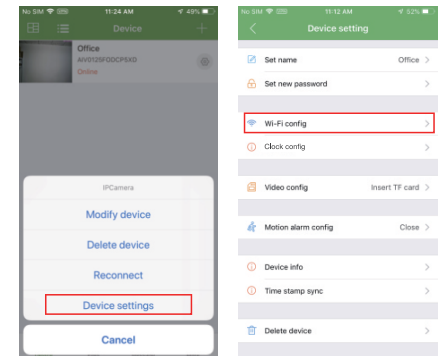
9



- ① Alarm clock OFF switch
- ② 100-220V Output
- ③ 2 USB output
- ④ Camera
- ⑤ Night vision LED
- ⑥ Clock

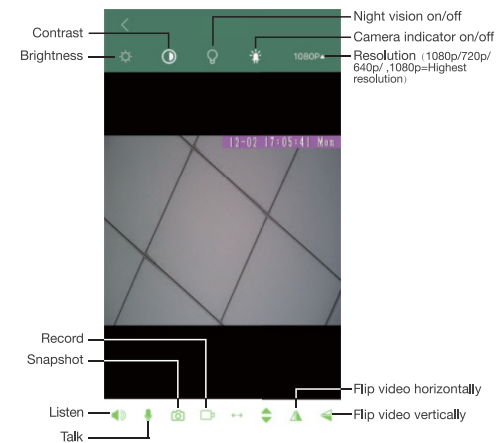
2

3.Press the gear icon after the camera and select Device settings ,select Wi-Fi Config.

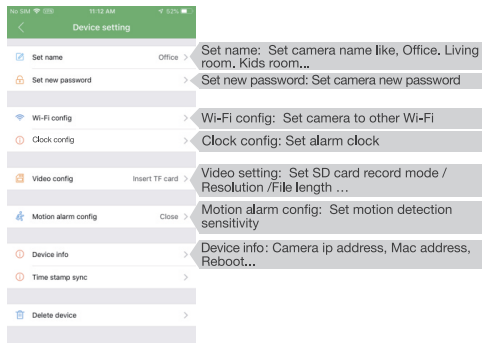


6

## Live video page - Click camera to check



10



**TIPS:**Each setting in Device Settings, please scroll down and press ok to save the setting.

11

5. Q: Forget camera password, or item goes abnormal?  
A: Turn on camera and wait for 1 minute, press reset key around 10 seconds till back indicators off to restore factory default. Camera restarts and get ready again in 1 minute.

6. Q: Any operation video demo of the camera for setting up?  
A: Please contact local dealer for video guide.

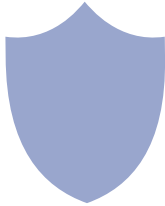
15

## Set and watch by PC remotely (Windows Only)



Scan to download PC Client

12



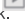
The end!

## Specification

Sensor	2.0 Mega pixel CMOS Lens
Video resolution	1920*1080
Photo resolution	1920*1080
Compressed format	H.264
View Angel	90°
Night Vision	Invisible 5M
Type of Memory Card	TF>=Class 4/10 HC Marked
Capacity of Memory Card	Max 128GB
PC operation system	Windows 7,8/Mac OS X
Mobile Phone operation system	Android/iOS
Video Player	VLC Player/SM Player
Recording	1min/8mb
Power Outlets	100-240V 10A
USB output	5V1A

13

## FAQ

1. Q: Can't get device Wi-Fi signal?  
A: Press reset key for 10 seconds and wait 1 minute.
2. Q: Live video not smooth and clear?  
A: Select suitable resolution according to the real time network environment.
3. Q: Motion detect set and alarm?  
A: 1). Set motion detect sensitivity in Motion alarm config;  
2). When motion detected, camera will push a alarm message to your phone and take one picture for checking in the APP [ Page 9 - Message ]. (A micro sd card MUST be inserted for saving alarm pictures)
4. Q: How to play micro SD card video?  
A: 1). Use a card reader to read and play;  
2). Use APP to play back [ Page 9 -  ];  
3). Play back in good speed network.

14