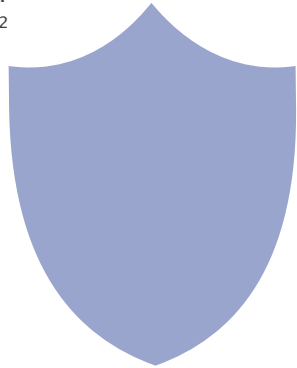


Long Standby Wi-Fi Audio Recorder with Low Power Consumption

User Manual

Version:July2022

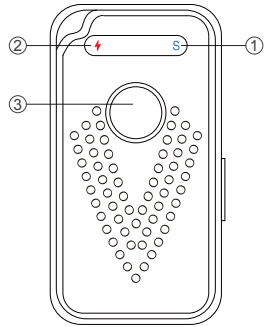


Size:10x30x60mm



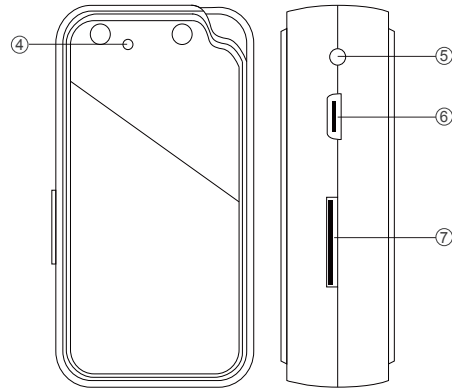
1

Product structure



- ① Working indicator
- ② Charging indicator
- ③ ON/OFF switch

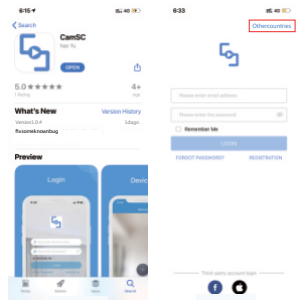
4



- ④ Reset
- ⑤ Hole for external battery plug (Optional)
- ⑥ USB port
- ⑦ Micro SD card slot

5

2. Open APP CamSC, select current region at the top right corner. Register with email, or third-party account like Facebook or iOS account. (Tips: If a code doesn't arrive, please check the spam folder first.)



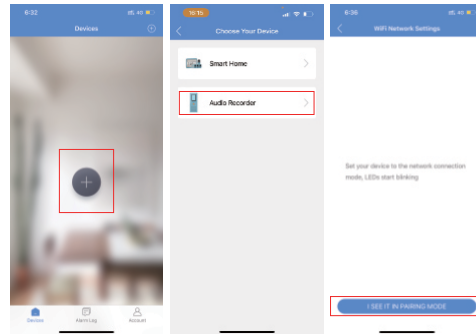
Step 2: Make device ready to pair

1. Long press ON/OFF for 2 seconds, the blue indicator is on means the device is on. And release the button and working indicator will be off.
2. Short press ON/OFF one time, the blue indicator blink quickly means the device is ready to pair.

8

Step 3: Connect WiFi

1. Open APP CamSC >> Click >> Audio Recorder >> Device in pairing mode >> CAM-xxxxxx.



9

Quick guide of Wi-Fi Audio Recorder function

- Download & Install Free App <CamSC> from App Store or Google Play;
Tips: Please allow "CamSC" to notification, Bluetooth and location while using the App.
 - Enter App, select your region at the top right corner and register;
Tips: If a code doesn't arrive, please check the spam folder first.
 - Insert micro SD card --> Long press ON/OFF for 2 seconds and release --> Press ON/OFF one time again to pair (Blue indicator blinking = Pairing mode is ready now.)
 - Enter App, Click >>> Audio recorder >> Pairing Mode >> Click device name >> Select Wi-Fi >> Input password > NEXT.
 - Device online in around 10 seconds & Wi-Fi live audio is ready.
- P.S.: Contact local dealer for tutorial video setting up.

2

Hardware Tips:

Working indicator status

- Long press ON/OFF for 2 seconds, the blue indicator is on means the device is on. And release the button and working indicator will be off.
- Short press ON/OFF one time, the blue indicator blink quickly means the device is ready to pair.
- Working indicator will be off once device has been connected with local Wi-Fi.

Charging indicator status

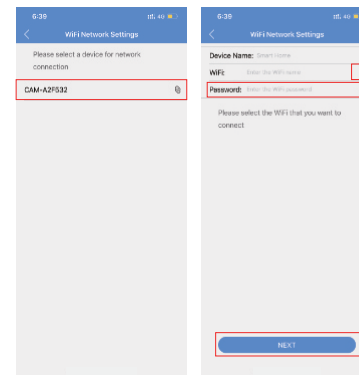
Red light blink means charging, and solid when fully charged

Turn Off & Reset

- Long press ON/OFF for 2 seconds, the blue indicator blink twice and off means the device is turned off.
- Reset pin press Reset hole for 2 seconds, device then is restored to factory default.

6

2. Click > at the end of WiFi to select the local 2.4G Wi-Fi, then input password.
Click NEXT and wait around 10 seconds to finish the configuring; Device Binding Successful and online now.



10

Overview:

The Wi-Fi Audio Recorder is a tiny size but powerful audio security device. It doesn't rely on SIM card transmission but based on Wi-Fi connection, so no monthly costs. Also, it is with three modes: include two power save modes for long standby use.

First, it can be used for checking live time audio day and night, and record live audio info based on set sensitivity and push notification to mobile for security purposes;

Second, it has excellent recording effect and can ensure the high fidelity sound effect of playback recording. Also, it has cycle recording and work when charging.

Usages: Nanny audio recorder, Home/Shop/Office/Warehouse surveillance audio recorder.

Warning: "Illegal use is not allowed! Or, there will be consequences to bear!"

In the box:

- 1 x Wi-Fi Audio Recorder
- 1 x Micro SD Card Reader
- 1 x USB Cable
- 1 x User Manual
- 1 x Reset pin

3

Wi-Fi Camera Connection Setting

Step 1: CamSC APP

1. Scan below QR code or search and download free APP named <CamSC> in Apple APP store, Google play or Electronic market, and install it;

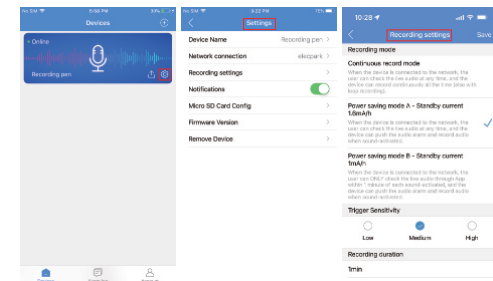


APP: CamSC

Tips: Please allow "CamSC" to notification, Bluetooth and location while using the App.

7

4. Click > in APP's first interface, select Recording Setting can choose the mode, to do device setting (such as selection of mode & sensitivity) etc...



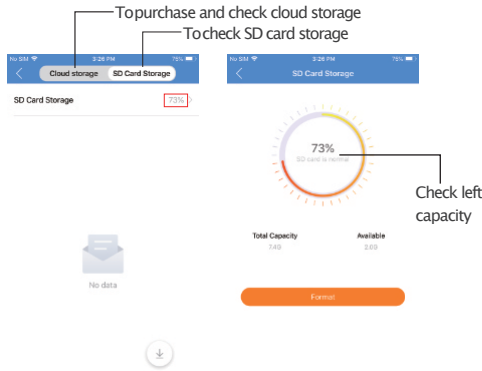
11

Wi-Fi Audio Recorder Normal Status

Device default with power save mode B, and can be changed. Three models:

- 1. Continuous record mode
When the device is disconnected to the network, the user can check the live audio at any time, and the device can record continuously all the time (also with loop recording).
- 2. Power saving mode A – Standby current 1.6mA/h
When the device is disconnected to the network, the user can check the live audio at any time, and the device can push the audio alarm and record audio when sound-activated.
- 3. Power saving mode B – Standby current 1mA/h
When the device is disconnected to the network, the user can ONLY check the live audio through App within 1 minute of each sound-activated, and the device can push the audio alarm and record audio when sound-activated.

12

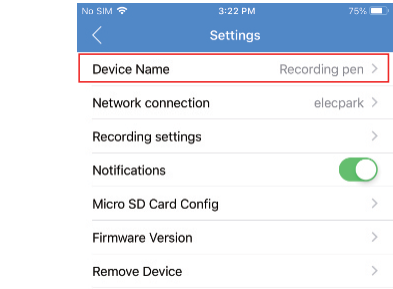


16

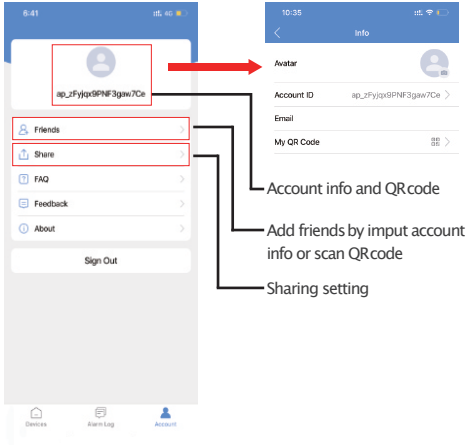
FAQ

- 1.Q: Is device with offline and low power notification?
A: Yes.
- 2.Q: What does the device do when WiFi off?
A: Keep searching WiFi signal 3mins, 10mins, 1hour, 2 hours, 5hours, 24hours later; If WiFi on, it will be connected to WiFi automatically.
- 3.Q: If the steps in Page 9 can't move forward (Bluetooth Pairing Mode)?
A: Delete the App and Download again to test, and agree all permissions (Allow notification, Bluetooth and location).

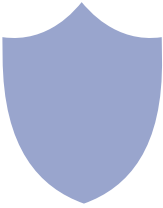
Set name: Press the [icon] after the device, select Device Name --> Input needed name like Office, Living room etc...



13

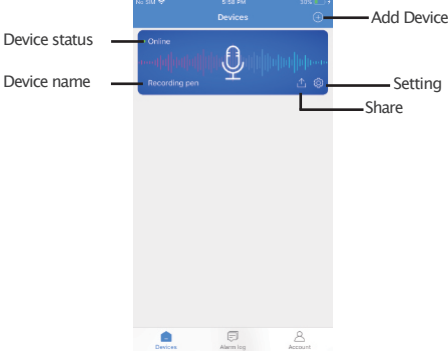


17

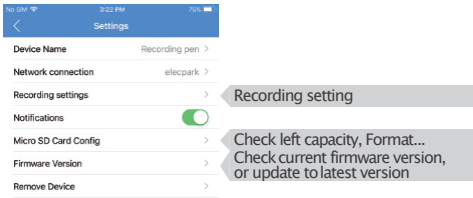


The end!

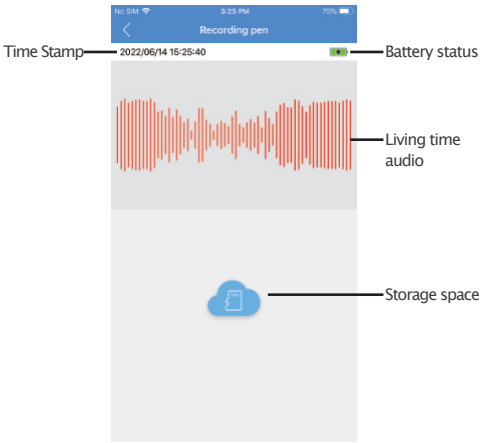
APP Introduction



14



18



15

Specification

Battery	600mA
Charging time	Around 3hours
Power consumption while working	80mA
Working time of Continuous record mode	Around 6~7hours
Standby current -Power saving mode A	1.6mA/h
Standby time -Power saving mode A	Around 14 days
Standby current -Power saving mode B	1mA/h
Standby time -Power saving mode B	Around 20 days

Optional: If need, device can be plugged with external battery for super long term operation (Pls ask manufacturer to add external battery plug when production).

19